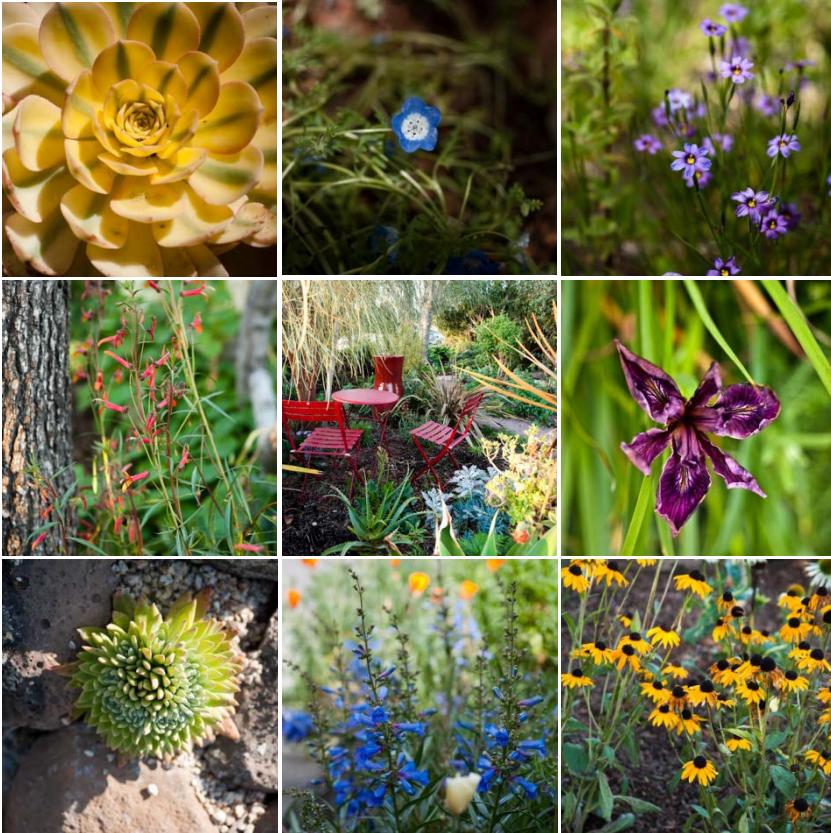


Alameda County Water District
510.668.4218
www.acwd.org



Photos By Stephanie Penn



Water-Efficient Landscape Rebate Program



Photo By Stephanie Penn

Trade in your high-maintenance and water-thirsty lawn for a more natural, low maintenance, and water-efficient landscape, and ACWD will give you money back for doing it!

Get a Rebate of up to \$20,000*

**Rebate is based on \$0.50 per square foot of lawn converted to water-efficient landscape. Commercial and industrial customers, multifamily homes, and HOAs are eligible for up to \$20,000. Rebates are issued on a first-come, first-served basis. Funding is limited and may be exhausted without prior notice.*



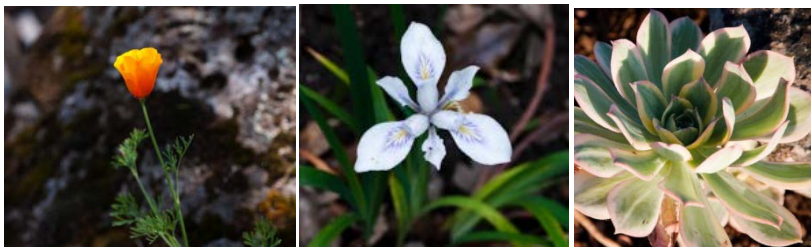
Program Information

Alameda County Water District (ACWD) is offering rebates to commercial, industrial, institutional, multi-family and home owner association customers who replace their landscaped areas with a water-efficient landscape. These beautiful new landscapes can save you money on water bills, fertilizers, pesticides and maintenance.

How do I participate?

- 1 Carefully measure the lawn area you want to convert.
- 2 Fill out and submit the attached application. ACWD will review your application and call to schedule an appointment for a pre-conversion inspection.
- 3 Meet with ACWD for a pre-conversion inspection and approval.
- 4 Complete the project within 90 days from the approval date and notify ACWD when it is complete.
- 5 Meet with ACWD for a post-conversion inspection.

**Rebate checks may take six to eight weeks to process. Check with ACWD to ensure availability of funds.*



Program Details (continued)

Qualifying Water-Efficient Landscape Projects:

- California native or climate-appropriate plants that require little or no supplemental irrigation. Please visit www.acwd.org for resources on appropriate plants.
- Converted areas must have a minimum of 50% plant cover.
- Permeable hardscape such as pavers, bricks or flagstone set in sand, gravel or decomposed granite. Water must pass through or be absorbed by landscaping materials.
- If converted area is irrigated, only drip systems are allowed.
- All planted areas must have at least a three-inch layer of mulch.
- Sheet mulching must be at least four inches in depth.

Non-Qualifying Projects:

- Plant material that requires regular water and is not adapted to a summer-dry climate.
- Artificial lawn/turf installations
- Non-biodegradable weed-block material.
- Exposed soil surfaces (exceptions may be made for enhancing insect habitat).
- Overhead spray/sprinkler systems.
- Impermeable surfaces such as concrete, bricks or flagstone mortared into place.

Program Details

Water-Efficient Landscape Program Qualifications

- Project must be approved by ACWD before any lawn is removed. ACWD pre- and post-conversion inspections are required.
- Customers must convert a minimum of 200 square feet of lawn. A majority of which should be visible from the street.
- Landscaped areas outside the lawn conversion area will not be included in the rebate calculation, i.e., eligible square footage.
- The site must be served by an ACWD water account. The lawn proposed for conversion must be *currently* irrigated with ACWD water and actively maintained during the last 18 months.
- If applicant is not the property owner, written permission from the property owner is required.
- Customers may participate one time per water account
- Projects should be completed within 90 days of ACWD approval (**Notice to Proceed**), unless ACWD approves additional time.

Rebate Amounts

- Rebate amount is **\$0.50 per square foot** of lawn converted.
- Maximum rebate amount is **\$20,000** for commercial, industrial, and institutional, multi-family and homeowner association sites.
- **Receipts** are required for all landscaping materials; rebates will not be issued for labor, rentals or tools.
- Rebate checks may take 6 to 8 weeks to process following post-conversion approval. Rebates may be considered taxable income. Please consult with your tax accountant to determine what impact this may have on your tax situation. Please fill out and **submit the enclosed W-9**, your rebate will not be processed without a completed W-9.



Application Checklist

Application checklist

- Did you measure only the lawn area to be converted and is a majority of the area visible from the street?
- Are you converting a minimum of 200 square feet of lawn?
- Is the lawn area to be converted currently being maintained and watered?

Lawn conversion checklist

My plan includes one or more of the following (please check all that apply):

- A minimum of 50 percent plant cover
- Drip irrigation only (if area is to be irrigated)
- A minimum of 3" layer of mulch in planted areas
- Climate-appropriate plants
- Permeable hardscape

Check to make sure that your plan **does not** include the following:

- No artificial turf
- No non-biodegradable weed-block material
- No Overhead spray/sprinkler systems
- No Exposed soil surfaces
- No inclusion of areas that were not lawn
- No impermeable hardscape (i.e. cement, flagstone mortared into place)

Resources

Visit www.acwd.org for help with your Water-Efficient Landscape Project:

- Program Terms and Conditions and Frequently Asked Questions
- Information about water efficient plants appropriate for this program and links to several helpful websites and online tools

